

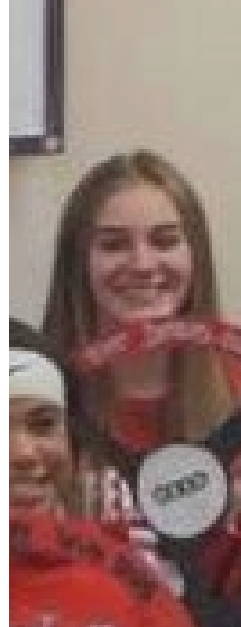


LIFE IS YOUR JOURNEY  
TRAVEL  
DRUG FREE

# Cuyahoga Falls City Schools

Facilities Committee Meeting #11

January 31, 2019



# Agenda

**Focus on Secondary  
Grade Levels**

Group Master Planning  
Exercise

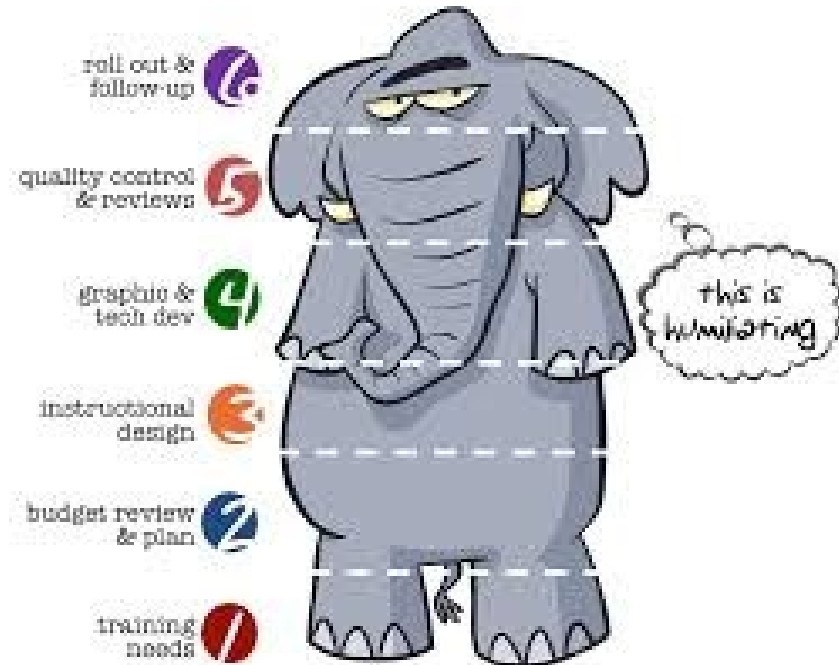
Questions

# Focus on Secondary Grade Levels

We know intellectually that the best way to accomplish something big is to approach it in smaller pieces.

Remember: eating an elephant can only be done one way: one bite at a time. Trying to gulp it down in one sitting is asking for severe indigestion.

*Source: How to eat an elephant, Beth Buelow, April 21, 2010*



# Focus on Secondary Grade Levels

- Large consensus (73%) amongst committee to address upper grade levels in Segment 1
- Let's focus tonight on upper grade levels – taking our big task by breaking it down into smaller pieces
- Question for Board and Administration: Placement of 6<sup>th</sup> grade

# Agenda

Focus on Secondary  
Grade Levels

**Group Master Planning  
Exercise**

Questions

# Group Exercise – Master Planning Piece by Piece

High level concept right now. We will dive into the details in future meetings.

- No swing space or phasing costs included at this time
- No site logistics included at this time
- No enhanced reprogramming at this time
- No LFI's considered at this time

# Group Exercise – Master Planning Piece by Piece

## High School Considerations & Comments from Last Meeting

Keep Existing HS		Construct New HS	
Pros	Cons	Pros	Cons
Retain Auditorium	20 <sup>th</sup> Century Design & layout	Opportunity for 21 <sup>st</sup> & 22 <sup>nd</sup> century / student centered learning design	Auditorium would be an additional LFI cost
Retain large gym	Not flexible	Opportunity to design with flexibility	OFCC co-funded gym space would be much smaller – possible LFI to enlarge
Lower overall cost	Some interior spaces are not right sized	Opportunity to design spaces to be right sized	Higher overall cost
Retain current career technical spaces	Need to demo portions to eliminate excess space (or fill with grades 7-12)	Increased longevity	Some career tech portions may not be co-funded due to enrollment guidelines
Historical value/Nostalgia		Loss of history	

# Group Exercise - Master Plan Options for Secondary Grades

EXIST'G HIGH SCHOOL 4TH ST.

13TH ST. NEW MS & RENO ROBERTS

RENO/DEMO/ADD TO EXISTING HIGH SCHOOL FOR GRADES 9-12

**Scope:**

- Demo 1922 portion of existing high school.
- Renovate remaining portions.
- Construct an addition of 49,769 SF.

Total SF = 251,767 SF

Number students: 1,441 students

Cost: \$57.5M

13TH ST.

BUILD (1) NEW 6-8 SCHOOL

**Scope:**

- Construct new 6-8 School.

Total SF = 148,797 SF

Number students: 1,082 students

Cost: \$40.7M

RENOVATE ROBERTS MS FOR 6-8 + BUILD (1) NEW 6-8 SCHOOL

**Scope:**

- Renovate Roberts for grades 6-8
- Construct new 6-8 School

Roberts MS SF = 75,249 SF  
New 6-8 School SF = 63,593 SF

Number students Roberts MS: 500 students  
Number students New MS: 582 students

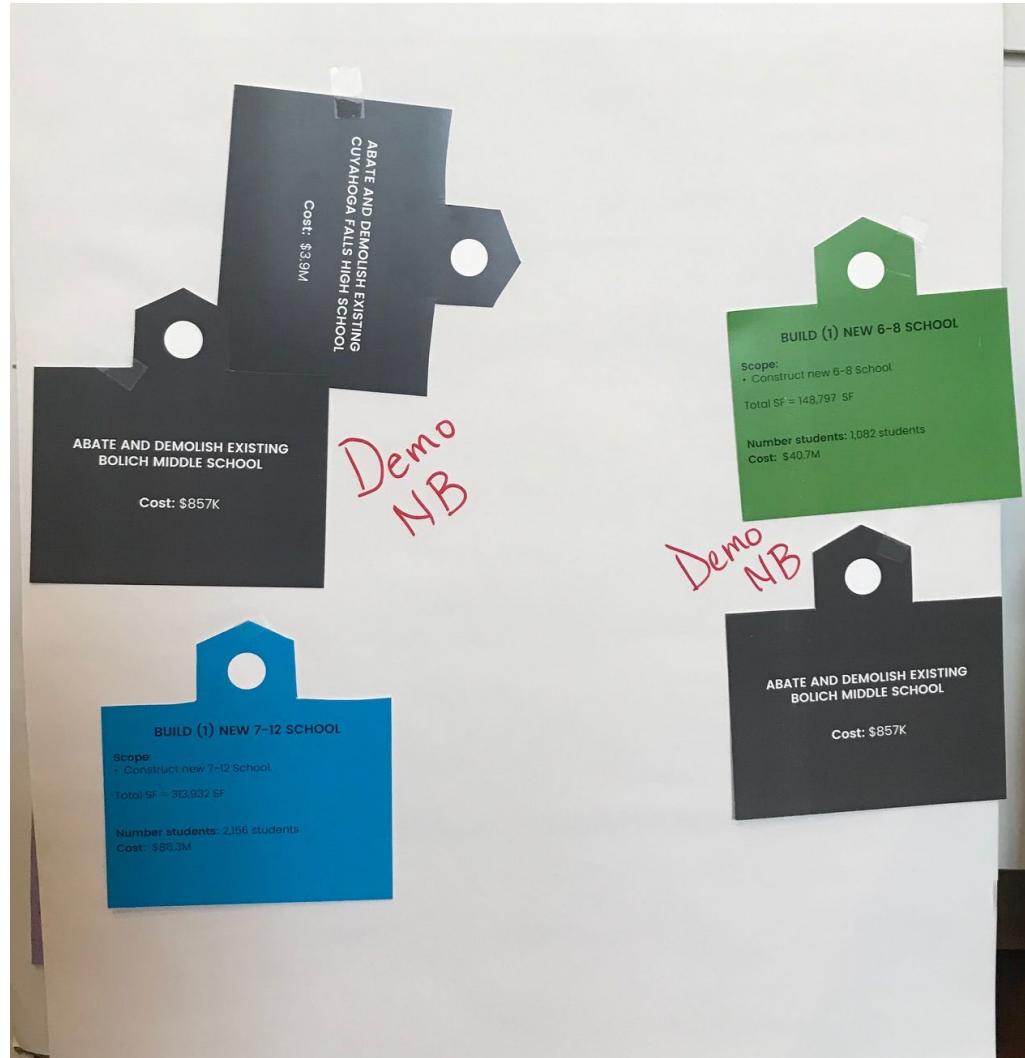
Cost Roberts MS: \$10.4M  
Cost New MS: \$23.7M

ABATE AND DEMOLISH EXISTING BOLICH MIDDLE SCHOOL

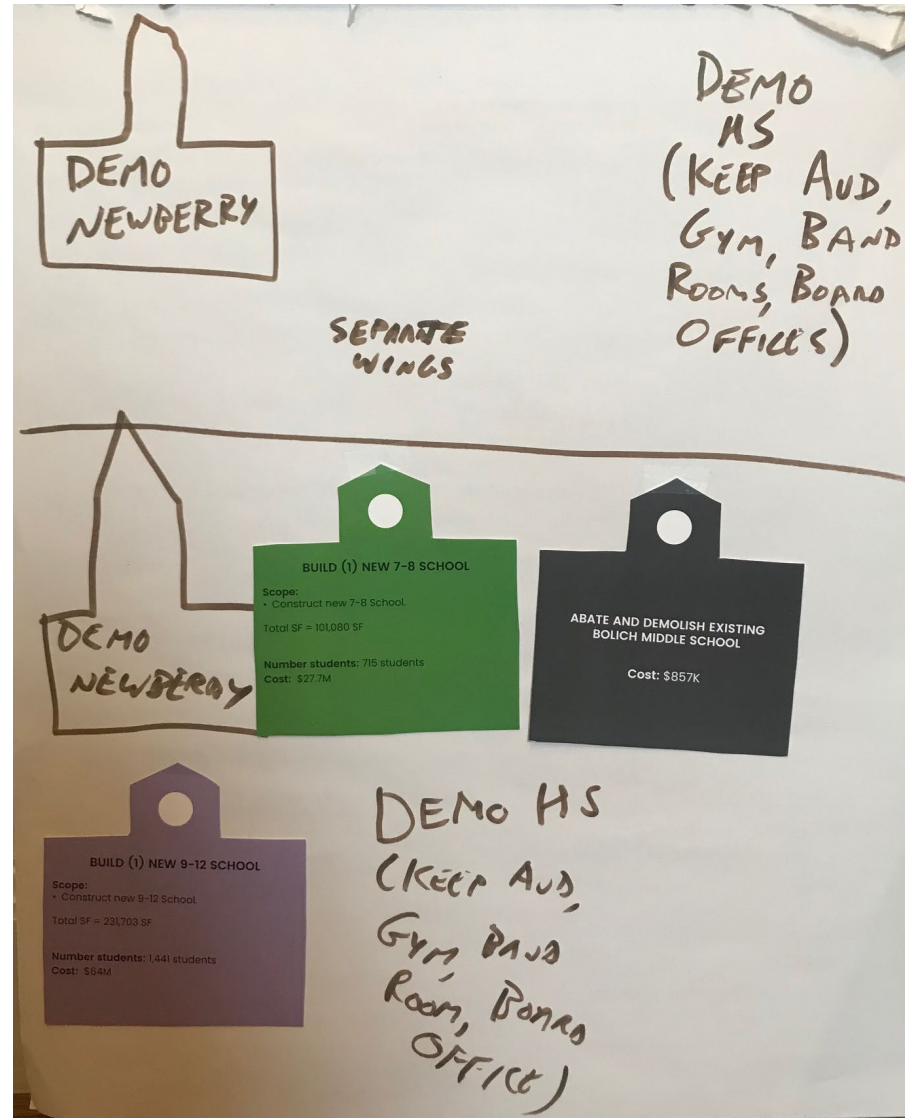
Cost: \$857K



# Group Exercise – Master Plan Options for Secondary Grades



# Group Exercise - Master Plan Options for Secondary Grades



# Agenda

Focus on Secondary  
Grade Levels

Group Master Planning  
Exercise

**Questions**

